

MAPS PREPARED BY GREINER, INC.		FIELD BOOK NO'S 88-46, 88-89 88-90, 88-91, 88-92.	
		SCALE: 1"=400'	
CONTRACT NO. Y8-849B		SHEET 1 OF 12	

$$\begin{array}{r} + 84.35 \\ 142.34 \text{ LT.} \\ \hline \end{array}$$

ADD'L R/W BY
O.R. 5235, PG 2396

R = 270.00'
 $\Delta = 60^{\circ}02'01''$
 L = 282.90'
 C = 270.14'
 CB = N $18^{\circ}43'15''$ E


$$\underline{1'' = 40'}$$

S.W. COR. N.E. 1/4 SEC. 11

B SURV. - C CONST.
 R = 954.93'
 Δ = 48°00'00"
 L = 800.00'
 T = 425.16'
 PC = 157+68.95
 PI = 161+94.11
 PT = 165+68.95

R = 899.93
 $\Delta = 11^{\circ}27'36''$
 L = 180.00'
 C = 179.70'
 CB = N 42°21'39" E

R = 2614.93'
 Δ = 03°39'08"
L = 166.69'
C = 166.66'
CB = S 06°58'32" W



$R = 2614.93'$
 $\Delta = 11^{\circ}24'16''$
 $L = 520.49'$
 $C = 519.63'$
 $CB = N\ 14^{\circ}30'14''\ E$

$R = 2614.93'$
 $\Delta = 11^\circ 24' 16''$
 $L = 520.49'$
 $C = 519.63'$
 $CB = N 14^\circ 30' E$

- R = 2664.93
 $\Delta = 29^{\circ}53'07''$
 L = 1390.02'

$R = 2714.93'$
 $\Delta = 26^{\circ}10'30''$
 $L = 1240.29'$
 $C = 1229.53'$
 $CB = N 13^{\circ}10'42'' E$

ORANGE COUNTY, FLORIDA
RIGHT OF WAY MAP
TURKEY LAKE ROAD

	BY	DATE	APPROVED BY	DATE
DRAWN	GFF	SEPT.1990		
TRACED	DJK	SEPT.1990		
CHECKED	JMJ	SEPT.1990		

MAPS PREPARED BY GREINER, INC.	FIELD BOOK NO'S 88-46, 88-89, 88-90, 88-91, 88-92.
-----------------------------------	---

		SCALE: 1"=40'
CONTRACT NO. Y8-849B		SHEET 2 OF 12

SECT. 12, T-24-S, R-28-E

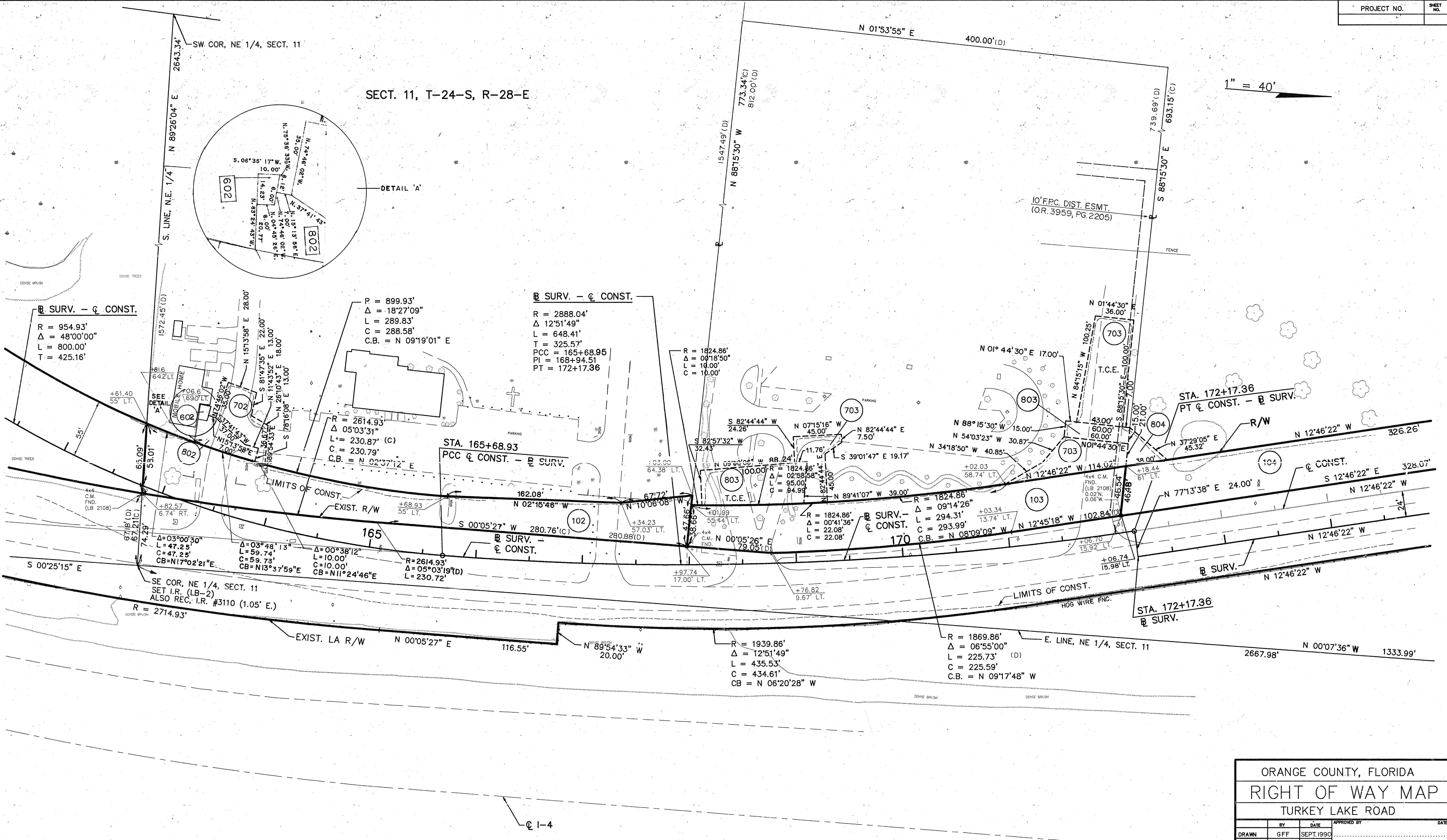
- S.E. COR. SECT. 11

ADD Q.R. 5235	GIY	10/24/97
REVISION	BY	DATE

CONTRACT NO. Y8-849B SHEET 2 OF 12

SECT. 11, T-24-S, R-28-E

1" = 40'



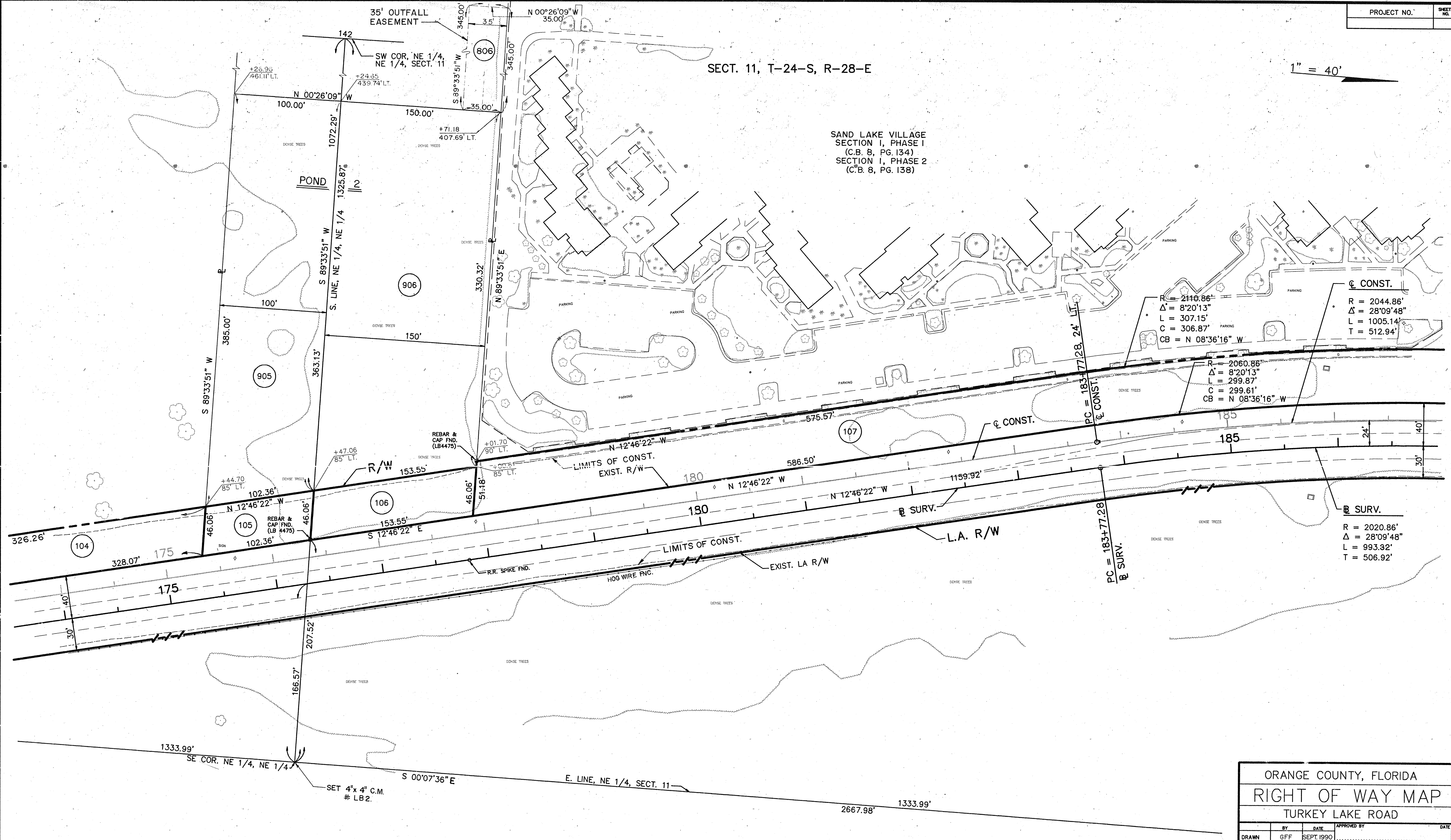
SECT. 12, T-24-S, R-28-E

ORANGE COUNTY, FLORIDA			
RIGHT OF WAY MAP			
TURKEY LAKE ROAD			
DRAWN	BY	DATE	APPROVED BY
TRACED	DJK	SEPT. 1990	
CHECKED	JMJ	SEPT. 1990	
MAPS PREPARED BY		FIELD BOOK NOS	
GREINER, INC.		88-46, 88-89, 88-90, 88-91, 88-92	
SCALE: 1"=40'			
CONTRACT NO. Y8-849B		SHEET 3 OF 12	

SECT. 11, T-24-S, R-28-E

1" = 40'

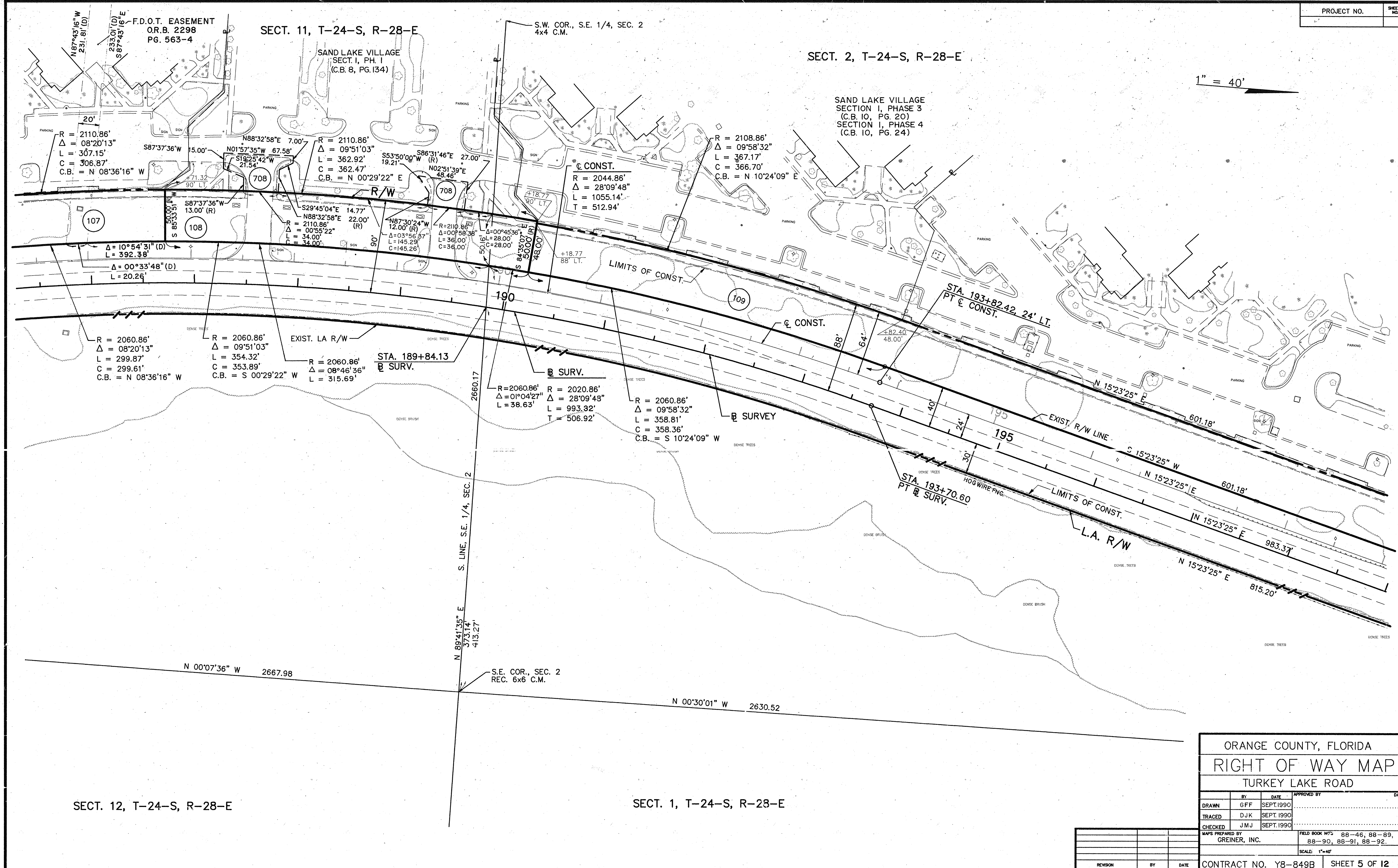
SAND LAKE VILLAGE
SECTION I, PHASE I
(C.B. 8, PG. 134)
SECTION I, PHASE 2
(C.B. 8, PG. 138)



SECT. 12, T-24-S, R-28-E

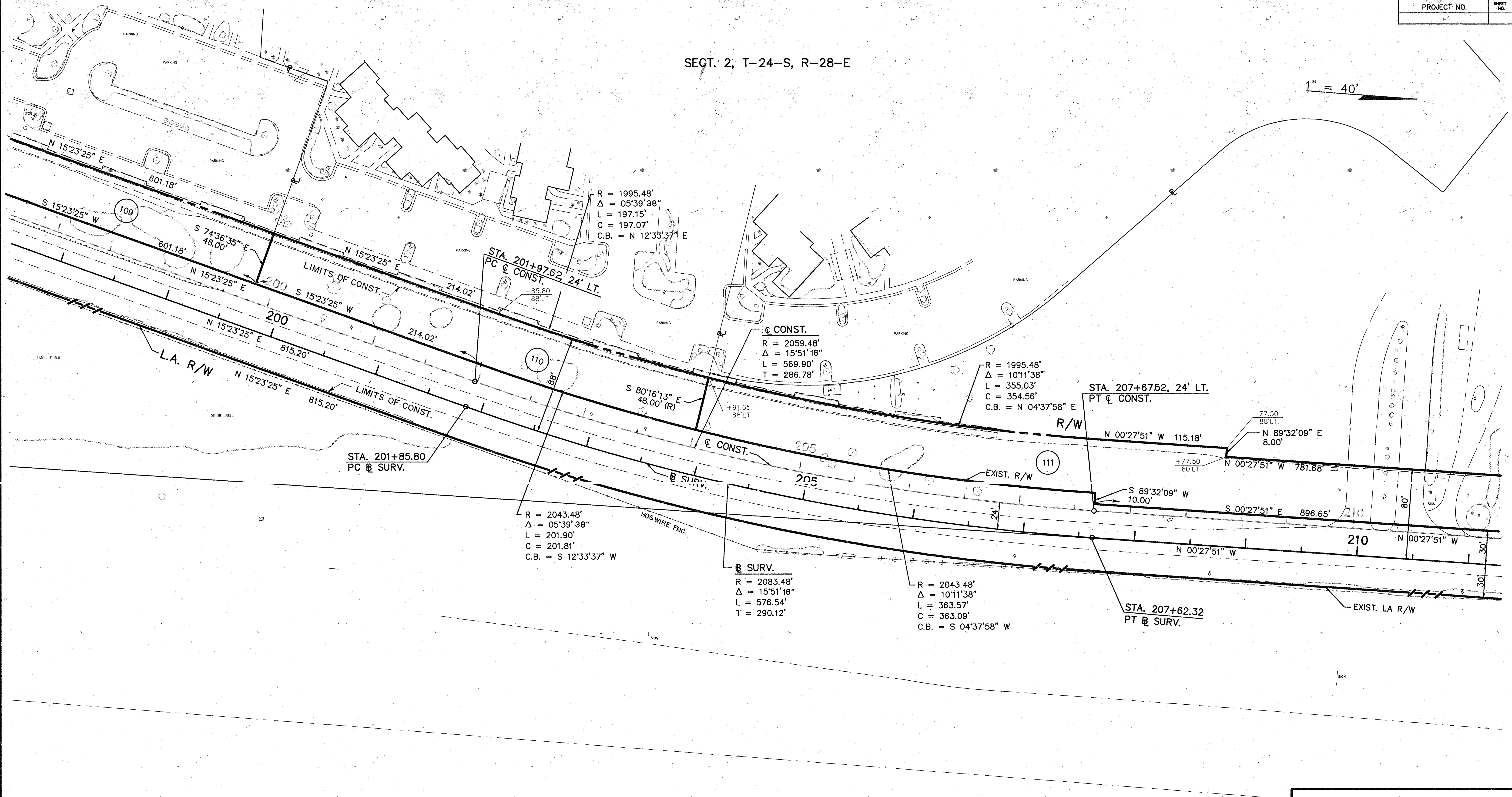
ORANGE COUNTY, FLORIDA			
RIGHT OF WAY MAP			
TURKEY LAKE ROAD			
DRAWN	BY	DATE	APPROVED BY
TRACED	DJK	SEPT. 1990	
CHECKED	JMJ	SEPT. 1990	
MAPS PREPARED BY GREINER, INC.		FIELD BOOK NO'S 88-46, 88-89, 88-90, 88-91, 88-92.	
SCALE: 1"=40'			
CONTRACT NO. Y8-849B		SHEET 4 OF 12	

REVISION	BY	DATE



SECT. 2, T-24-S, R-28-E

1" = 40'



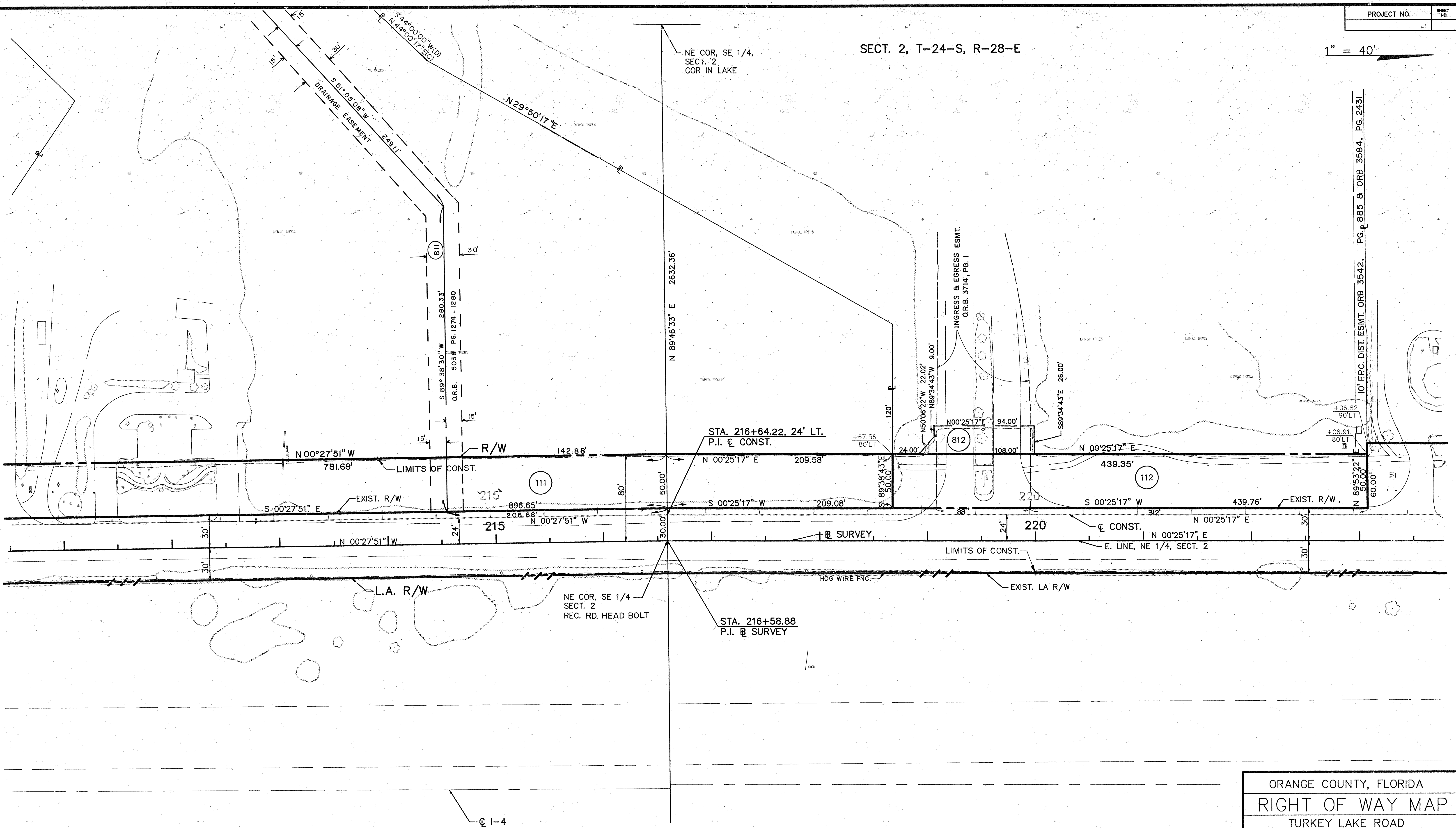
SECT. 1, T-24-S, R-28-E

ORANGE COUNTY, FLORIDA			
RIGHT OF WAY MAP			
TURKEY LAKE ROAD			
BY	DATE	APPROVED BY	DATE
DRAWN GFF	SEPT. 1990		
TRACED DJK	SEPT. 1990		
CHECKED JMJ	SEPT. 1990		
MAPS PREPARED BY GREINER, INC.		FIELD BOOK NOS 88-46, 88-89, 88-90, 88-91, 88-92	
SCALE: 1"=40'			
CONTRACT NO. Y8-849B		SHEET 6 OF 12	

711	GFF	7/19/91
DEL. PAR. 711 & 811	D.J.K.	1-28-97
REVISION	BY	DATE

SECT. 2, T-24-S, R-28-E

1" = 40'

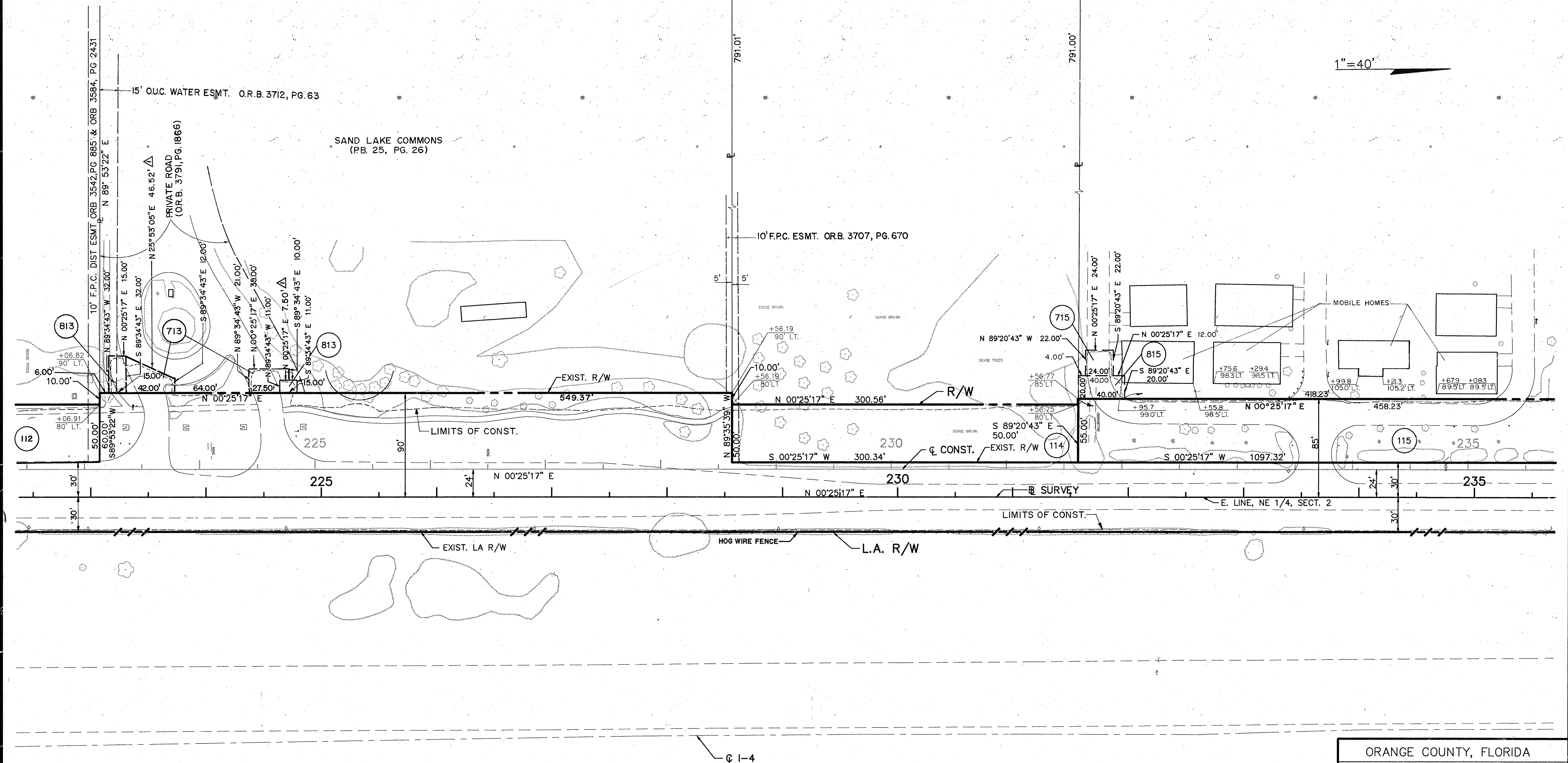


SECT 1, T-24-S, R-28-E

ORANGE COUNTY, FLORIDA			
RIGHT OF WAY MAP			
TURKEY LAKE ROAD			
DRAWN	BY	DATE	APPROVED BY
TRACED	DJK	SEPT. 1990	
CHECKED	JMJ	SEPT. 1990	
MAPS PREPARED BY GREINER, INC.			FIELD BOOK NOS 88-46, 88-89, 88-90, 88-91, 88-92
SCALE: 1"=40'			
REVISION	BY	DATE	CONTRACT NO. Y8-849B
			SHEET 7 OF 12

901 89 351"

SECT. 2, T-24-S, 12-28-E



SECT. 1, T-24-S, R-28-E

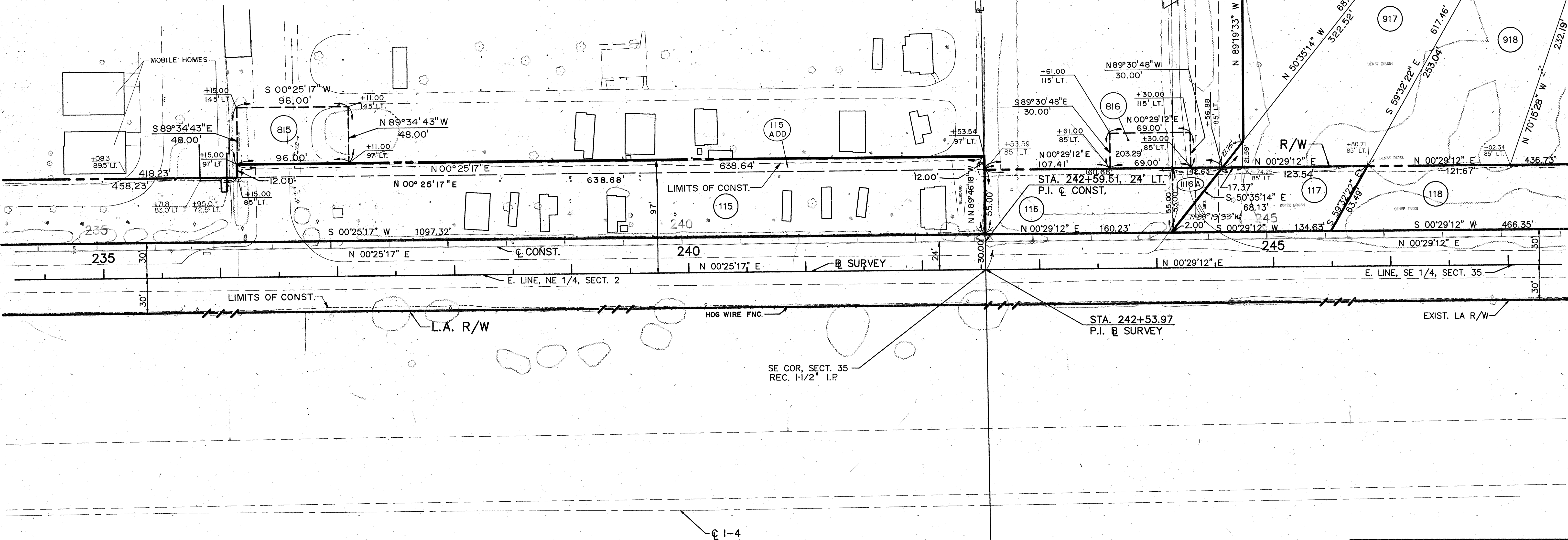
ORANGE COUNTY, FLORIDA			
RIGHT OF WAY MAP			
TURKEY LAKE ROAD			
BY	DATE	APPROVED BY	
DRAWN	GFF	SEPT. 1990	
TRACED	DJK	SEPT. 1990	
CHECKED	JMJ	SEPT. 1990	
MAPS PREPARED BY		FIELD BOOK NO'S	
GREINER, INC.		88-46, 88-89,	
		88-90, 88-91, 88-92.	
		SCALE: 1"=40'	
CONTRACT NO. Y8-849B		SHEET 8 OF 12	

REV. PARCEL 115	D.J.K.	1-28-97
PAR. 713/813 CONST. LIMIT	OCHC	2/7/94
PARCEL 713	GIY	6/93
REVISION	BY	DATE

SECT. 2, T-24-S, R-28-E

SECT. 35, T-23-S, R-28-E

1" = 40'

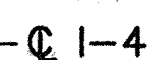


SECT. 1, T-24-S, R-28-E

SECT. 36, T-23-S, R-28-E

ORANGE COUNTY, FLORIDA			
RIGHT OF WAY MAP			
TURKEY LAKE ROAD			
BY	DATE	APPROVED BY	DATE
DRAWN GFF	SEPT. 1990		
TRACED DJK	SEPT. 1990		
CHECKED JMJ	SEPT. 1990		
ADD PAR. 115 ADD		OCHC 4-2-97	
112A-117-917		G.F.F. 1/25/91	
115-815		O.C.H.C. 1/9/91	
112		O.C.H.C. 3/9/93	
ADD 116 A		O.C.H.C. 8-1-95	
REV 115 ADD 815, 816		D.J.K. 1-28-97	
REVISION	BY	DATE	
CONTRACT NO. Y8-849B		SHEET 9 OF 12	

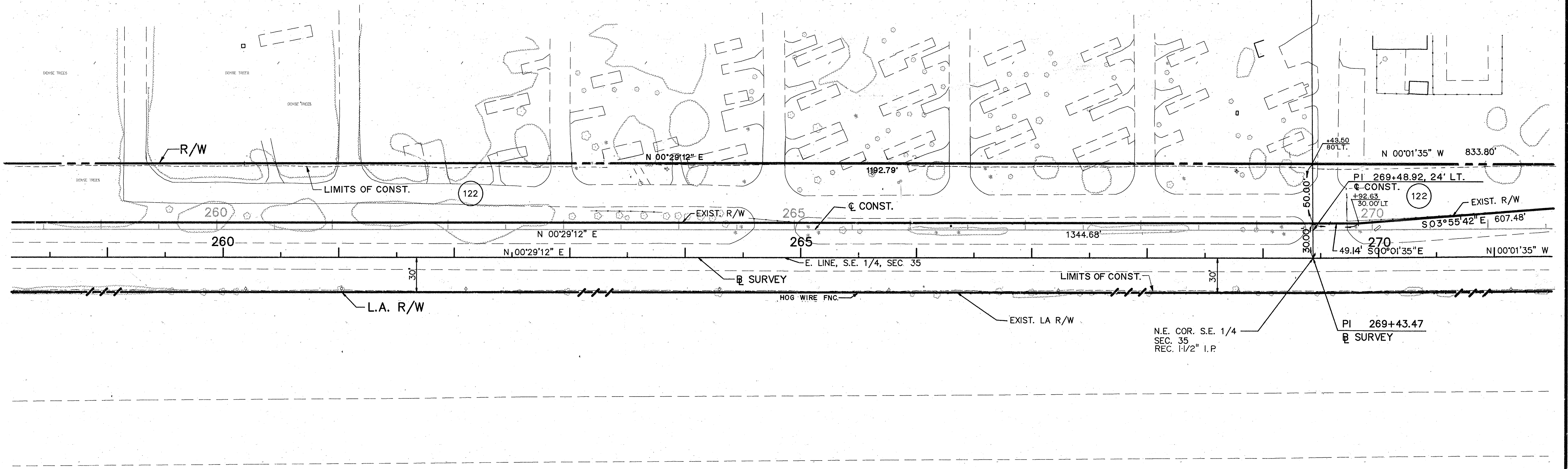
SECT. 36, T-23-S, R-28-E



PARCELS 721 & 722	GIY	6/96
PARCEL 719	GIY	6/93
REVISION	BY	DATE

1" = 40'

SECT. 35, T-23-S, R-28-E



SECT. 36, T-23-S, R-28-E

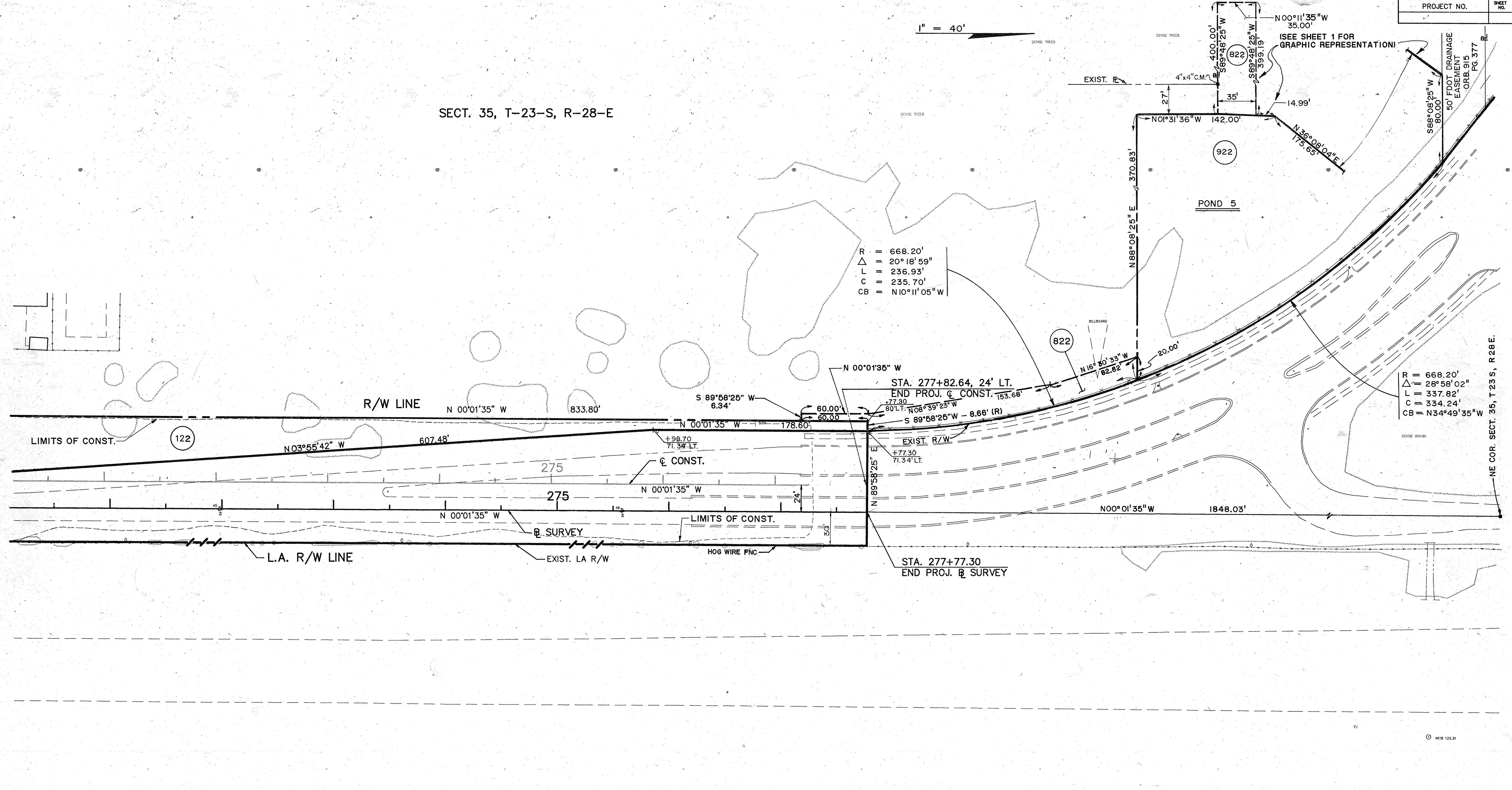
ORANGE COUNTY, FLORIDA			
RIGHT OF WAY MAP			
TURKEY LAKE ROAD			
BY	DATE	APPROVED BY	DATE
DRAWN GFF	SEPT.1990		
TRACED DJK	SEPT.1990		
CHECKED JMJ	SEPT.1990		
MAPS PREPARED BY GREINER, INC.		FIELD BOOK NO'S 88-46, 88-89, 88-90, 88-91, 88-92	
SCALE: 1"=40'			
CONTRACT NO. Y8-849B		SHEET 11 OF 12	

REVISION	BY	DATE

SECT. 35, T-23-S, R-28-E

1" = 40'

PROJECT NO. SHEET NO.



ORANGE COUNTY, FLORIDA			
RIGHT OF WAY MAP			
TURKEY LAKE ROAD			
DRAWN	BY	DATE	APPROVED BY
TRACED	DJK	SEPT.1990	
CHECKED	JMJ	SEPT.1990	
MAPS PREPARED BY GREINER, INC.			FIELD BOOK NO'S 88-46, 88-89 88-90, 88-91, 88-92
SCALE: 1"=40'			
CONTRACT NO. Y8-849B			SHEET 12 OF 12